

NEW AND RARE SPECIES OF LEPIDOPTERA IN LITHUANIA, REPORT OF 2022

POVILAS IVINSKIS¹, JOLANTA RIMŠAITĖ²

¹Nature Research centre, Akademijos 2, Vilnius Lithuania, E-mail: entlab@gmail.com,

²V. Druskio 1, Vilnius, Lithuania

Introduction

New data on Lepidoptera found using light and wine traps as well as a headlamp during the research in 2020–2022 in Lithuania is presented. Data on five species new for Lithuanian fauna, some rare species and species included in Red data book are presented in this paper.

Material and Methods

The main data was collected during field investigations in 2020–2022 by the authors of this paper, one report about *Cydalima perspectalis* was presented by J. Sendžikaitė (J.S.), larva of *Acherontia atropos* was found by Vincas Aleksandravičius (V.A.). Various entomological methods were used for collecting the specimens: light trapping with a screen (160W mixed light lamp), automatic traps with 300W solar-type lamps and headlamp "Lumonite", plant mine collecting, sweeping with nets. The material was identified using identification guides: Bengtsson *et al.* (2008), Bengtsson & Johansson (2011), Aarvik *et al.* (2009). Data on distribution and faunistics follows Aarvik *et al.* (2017, 2021), Ivinskis & Rimšaitė (2018). Taxonomical treatment and distribution follows the Fauna Europaea database (Karsholt & Nieuwerkerken, 2013) and Aarvik *et al.* (2017). The specimens are deposited in the authors collection. Species new to Lithuanian fauna are marked in the text with an asterisk (*).

List of localities

Locality	Administrative district	Coordinates (LAT, LONG)
Buivydiškės	Vilnius distr.	54.71741, 25.19799
Būtingė	Palanga mun.	56.05954, 21.06995
Fabijoniškės	Vilnius mun.	54.72568, 25.24384
Gvazdikai	Vilnius mun.	54.74997, 25.37807
Kalniškės	Vilnius distr.	54.84681, 25.17739
Lazdynai	Vilnius mun.	54.66947, 25.20948
Merkinė	Varėna distr.	54.15019, 24.16112
Paželsviai	Marijampolė distr.	54.41856, 23.43028
Perloja	Varėna distr.	54.20778, 24.37556
Punios šilas	Alytus distr.	54.52723, 24.10044
Romainiai cementary	Kaunas mun.	54.92057, 23.85097
Vanaginė	Vilnius mun.	54.77490, 25.27788
VU Botanic garden (Vingis)	Vilnius mun.	54.68301, 25.23201
Žvėrynas	Vilnius mun.	54.68973, 25.24497
Žvėrynas	Vilnius mun.	54.68629, 25.24870

List of species

GRACILLARIIDAE

***Parectopa robiniella* (Clemens, 1859)**

Romainiai, 11 08 2022, 5 mines on *Robinia* leaves; Vanaginė, 22 08 2022, 1 mine on *Robinia* leaves; Žvėrynas, 20 08 2022, 3 mines on *Robinia* leaves.

***Ornixola caudulatella* (Zeller, 1839)**

Gvazdikai, 25 06 2022, 1 spec.

***Acrocercops brongniardella* (Schleich, 1867)**

Gvazdikai, 01 08 2022, 1 spec.; Lazdynai, 07 07 2022, 3 leaves mined.

***Calybites quadrisignella* (Zeller, 1839)**

Gvazdikai, 26 07 2022, 1 spec., 05 08 2022, 1 spec.; Merkinė, 15 07 2021, 1 spec.; Perloja, 11 07 2021, 10 spec.

YPONOMEUTIDAE

***Yponomeuta irrorella* (Hübner, 1796)**

Gvazdikai, 17 07 2022, 1 spec.

***Yponomeuta sedella* Treitschke, 1832**

Gvazdikai, 17 07 2022, 1 spec., 01 08 2022, 4 spec., 03 08 2022, 1 spec., 05 08 2022, 4 spec., 14 08 2022, 1 spec.

ARGYRESTHIIDAE

****Argyresthia trifasciata* (Staudinger, 1871) (Fig. 1)**

Fabijoniškės, 05 06 2022, 1 spec., Kalniškės, 07–14 06 2022, abundant on *Chamaecyparis*.

PLUTELLIDAE

***Plutella porrectella* (Linnaeus, 1758)**

Gvazdikai, 27 06 2022, 1 spec.

***Rhigognostis hufnagelii* (Zeller, 1839)**

Gvazdikai, 29 06 2022, 1 spec., 27 08 2022, 1 spec.

****Rhigognostis schmaltzella* (Zetterstedt, 1839) (Fig. 2)**

Perloja, 28 07 2020, 1 spec.

GLYPHIPTERIGIDAE

***Orthotelia sparganella* (Thunberg, 1788)**

Kalniškės, 16 07 2022, 1 spec., 02 08 2022, 1 spec.

TORTRICIDAE

***Dichelia histrionana* (Frölich, 1828)**

Būtingė, 11 08 2022, 1 spec.; Gvazdikai, 25 06 2022, 2 spec., 28 06 2022, 1 spec., 22 07 2022, 1 spec., 01 08 2022, 2 spec., 02 08 2022, 1 spec., 15 08 2022, 1 spec., 21 08 2022, 1 spec., 29 08 2022, 1 spec.; Merkinė, 25 08 2022, 3 spec.

***Spatalistis bifasciana* (Hübner, 1787)**

Kalniškės, 27 06 2022, 1 spec., 30 06 2022, 1 spec., 08 07 2022, 1 spec.

***Acleris cristana* (Denis & Schiffermüller, 1775)**

Kalniškės, 16 05 2022, 1 spec., 22 05 2022, 1 spec.

***Acleris lorquinana* (Duponchel, 1835)**

Kalniškės, 05 07 2022, 1 spec., 06 07 2022, 1 spec.

***Endothenia gentianaeana* (Hübner, 1799) (Fig. 3)**

Kalniškės, 12 2021 seed heads of *Dipsacus*, im. 08 03–12 04 2022, 8 spec.



Fig. 1. *Argyresthia trifasciata*



Fig. 2. *Rhigognostis schmaltzella*



Fig. 3. *Endotaenia gentianana* in a seed head of *Dipsacus*



Fig. 4. *Coleotechnites piceaella*



Fig. 5. *Sciota lucipetella*

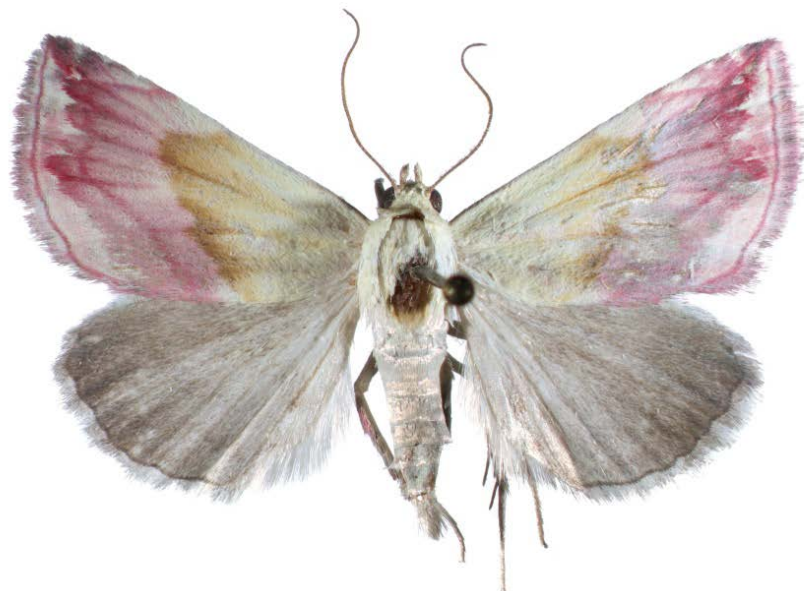


Fig. 6. *Eublemma purpurina*

LIMACODIDAE

***Heterogenea asella* (Denis & Schiffermüller, 1775)**

Gvazdikai, 27 06 2022, 1 spec.

***Apoda limacodes* (Hufnagel, 1766)**

Gvazdikai, 29 06 2022, 1 spec., 01 07 2022, 1 spec., 02 07 2022, 1 spec., 05 07 2022, 2 spec., 22 07 2022, 1 spec.

ZYGAENIDAE

***Zygaena ephialtes* (Linnaeus, 1767)**

Merkinė, 25 08 2022, 1 cocoon.

SESIIDAE

***Synanthedon conopiformis* (Esper, 1782)**

Punios Šilas f., 23 06 2022, 3 spec. (in wine trap).

AUTOSTICHIDAE

***Oegoconia deauratella* (Herrich-Schäffer, 1854)**

Gvazdikai, 17 07 2022, 1 spec., 19 07 2022, 4 spec., 20 07 2022, 4 spec., 22 07 2022, 3 spec., 24 07 2022, 2 spec., 26 07 2022, 1 spec., 29 07 2022, 3 spec. 31 07 2022, 1 spec. 01 08 2022, 5 spec, 02 08 2022, 3 spec.; 03 08 2022, 1 spec., 12 08 2022, 1 spec.; Kalniškės, 25 07 2022, 1 spec.; Merkinė, 25 08 2022, 1 spec.

OECOPHORIDAE

***Pleurota bicostella* (Clerck, 1759)**

Gvazdikai, 28 06 2022, 1 spec.

DEPRESSARIIDAE

***Anchinia daphnella* (Denis & Schiffermüller, 1775)**

Kalniškės, 08 07 2022, 1 spec.

GELECHIIDAE

***Dichomeris rasilella* (Herrich-Schäffer, 1854)**

Kalniškės, 14 07 2022, 2 spec., 21 07 2022, 1 spec., 22 07 2022, 1 spec., 14 08 2022, 1 spec., 15 08 2022, 1 spec.

***Gelechia jakovlevi* Krulikovsky, 1905**

Gvazdikai, 19 07 2022, 1 spec., 20 07 2022, 4 spec., 22 07 2022, 2 spec., 26 07 2022, 2 spec., 29 07 2022, 3 spec., 02 08 2022, 4 spec. 05 08 2022, 1 spec., 07 08 2022, 1 spec.

****Coleotechnites piceaella* (Kearfot, 1903) (Fig. 4)**

VU Botanic garden (Vingis), 13 07 2022, more than 10 specimens disturbed from *Thuja* plants.

SCYTHRIDIDAE

***Scythris sinensis* (Felder & Rogernhofer, 1875)**

Kalniškės, July 2021 about 10 gregarious larvae on *Chaenopodium*, im. March – June 2022.

PTEROPHORIDAE

***Cnaemidophorus rhododactyla* (Denis & Schiffermüller, 1775)**

Vilnius, Karoliniškės, 06 07 2022, 4 spec.

PAPILIONIDAE

***Papilio machaon* Linnaeus, 1758**

Kalniškės, 14 07 2022, 1 spec., 21 07 2022, 1 spec.

NYMPHALIDAE

***Nymphalis xanthomelas* (Esper, 1781)**

Gvazdikai, 07 10 2022, 1 spec.; Kalniškės, 04 07 2022, 1 spec., 05 07 2022, 1 spec.

LYCAENIDAE

***Lysandra coridon* (Poda, 1761)**

Merkinė, 25 08 2022, 2 spec.

***Lycaena dispar* (Haworth, 1802)**

Kalniškės, 30 06 2022, 1 spec.

PYRALIDAE

***Achroia grisella* (Fabricius, 1794)**

Gvazdikai, 31 07 2022, 1 spec., 28 08 2022, 1 spec.

****Sciota lucipetella* (Jalava, 1978)** (Fig. 5)

Kalniškės, 25 06 2022, 1 spec.

***Phycita roborella* (Denis & Schiffermüller, 1775)**

Gvazdikai, 31 07 2022, 1 spec., 02 08 2022, 1 spec., 15 08 2022, 1 spec.

***Etiella zinckenella* (Treitschke, 1832)**

Gvazdikai, 28 08 2022, 1 spec.

***Nephoterix angustella* (Hübner, 1796)**

Būtingė, 18 08 2022, 1 spec.; Gvazdikai, 16 08 2022, 1 spec., 26 08 2022, 1 spec., 28 08 2022, 3 spec.; Kalniškės, 15 08 2022, 1 spec.

CRAMBIDAE

***Nascia ciliaris* (Hübner, 1796)**

Kalniškės, 17 08 2022, 1 spec., 26 08 2022, 1 spec.

***Sclerocona acutella* (Eversmann, 1852)**

Gvazdikai, 25 06 2022, 2 spec., 27 06 2022, 6 spec., 29 06 2022, 1 spec., 30 06 2022, 1 spec. Kalniškės, 18 06 2022, 2 spec., 23 06 2022, 3 spec., 25 06 2022, 1 spec., 26 06 2022, 5 spec., 27 06 2022, 8 spec., 29 06 2022, spec., 30 06 2022, 1 spec.

***Cydalima perspectalis* (Walker, 1859)**

Buivydiškės, 08 2022, strongly infected 12 bushes of *Buxus* (J.S.); Justiniškės cemetery, average infected four bushes; Kalniškės, 13 07 2022, 1 spec.; Romainiai cemetery 11 08 2022, almost all bushes of *Buxus* in the cemetery were strongly infected, many dead bushes.

***Euchromius ocella* (Haworth, 1811)**

Gvazdikai, 28 08 2022, 19 spec. Kalniškės, 1 spec., 27 08 2022, 5 spec., 28 08 2022, 3 spec., 29 08 2022, 2 spec., 30 08 2022, 1 spec.; Merkinė, 25 08 2022, 38 spec.

DREPANIDAE

***Watsonalla binaria* (Hufnagel, 1767)**

Gvazdikai, 17 07 2022, 1 spec., 26 07 2022, 1 spec.; Kalniškės, 23 07 2022, 1 spec., 26 07 2022, 1 spec., 05 08 2022, 1 spec.

***Sabra harpagula* (Esper, 1786)**

Kalniškės, 26 06 2022, 1 spec., 25 07 2022, 1 spec., 05 08 2022, 1 spec., 16 08 2022, 1 spec.

GEOMETRIDAE

***Xanthorhoe designata* (Hufnagel, 1767)**

Kalniškės, 20 08 2022, 1 spec., 21 08 2022, 1 spec.

***Eustroma reticulata* (Denis & Schiffermüller, 1775)**

Kalniškės, 30 06 2022, 1 spec.

***Euphyia unangulata* (Haworth, 1809)**

Būtingė, 11 08 2022, 2 spec.

***Larentia clavaria* (Haworth, 1809)**

Gvazdikai, 29 08 2022, 1 spec.

***Venusia blomeri* (Curtis, 1832)**

Gvazdikai, 31 07 2022, 1 spec.; Kalniškės, 08 07 2022, 1 spec., 22 07 2022, 1 spec., 31 07 2022, 1 spec.

***Paraulype berberata* (Denis & Schiffermüller, 1775)**

Gvazdikai, 16 08 2022, 1 spec.; Kalniškės, 28 08 2022, 1 spec.

***Chloroclysta v-ata* (Haworth, 1809)**

Būtingė, 11 08 2022, 1 spec.; Kalniškės, 18 06 2022, 1 spec., 10 07 2022, 2 spec., 13 07 2022, 2 spec., 14 07 2022, 1 spec., 20 07 2022, 1 spec., 22 07 2022, 1 spec., 23 07 2022, 1 spec., 01 08 2022, 1 spec.

***Isturgia arenacearia* (Denis & Schiffermüller, 1775)**

Gvazdikai, 31 07 2022, 2 spec., 28 08 2022, 1 spec.; Merkinė, 25 08 2022, 9 spec.

***Peribatodes secundaria* (Denis & Schiffermüller, 1775)**

Gvazdikai, 19 07 2022, 1 spec.; Kalniškės, 13 07 2022, 1 spec.

***Lomaspilis opis* (Butler, 1878)**

Gvazdikai, 25 06 2022, 1 spec., 28 06 2022, 1 spec.

***Pseudopanthera macularia* (Linnaeus, 1758)**

Kalniškės, 09 06 2022, 1 spec.

***Apeira syringaria* (Linnaeus, 1758)**

Gvazdikai, 05 07 2022, 1 spec., 16 07 2022, 1 spec.; Kalniškės, 02 07 2022, 1 spec., 05 07 2022, 1 spec.

***Crocalis elinguaris* (Linnaeus, 1758)**

Gvazdikai, 24 07 2022, 1 spec., 29 07 2022, 1 spec., 31 07 2022, 1 spec., 01 08 2022, 2 spec., 02 08 2022, 1 spec., 03 08 2022, 1 spec., 07 08 2022, 1 spec.; Kalniškės, 21 07 2022, 1 spec., 23 07 2022, 1 spec., 23 07 2022, 1 spec., 24 07 2022, 1 spec., 25 07 2022, 2 spec., 27 07 2022, 2 spec., 29 07 2022, 1 spec., 30 07 2022, 1 spec., 02 08 2022, 1 spec.

***Ourapteryx sambucaria* (Linnaeus, 1758)**

Kalniškės, 29 06 2022, 1 spec., 06 07 2022, 1 spec., 16 07 2022, 1 spec.

***Ascotis selenaria* (Denis & Schiffermüller, 1775)**

Kalniškės, 29 08 2022, 1 spec.

LASIOCAMPIDAE

***Lasiocampus quercus* (Linnaeus, 1758)**

Gvazdikai, 20 07 2022, 1 spec.; Kalniškės, 14 07 2022, 1 spec., 18 07 2022, 2 spec.

***Lasiocampa trifolii* (Denis & Schiffermüller, 1775)**

Būtingė, 11 08 2022, 5 spec.

***Cosmotriche lobulina* (Denis & Schiffermüller, 1775)**

Būtingė, 11 08 2022, 5 spec., 18 08 2022, 1 spec.; Gvazdikai, 12 08 2022, 1 spec.; Kalniškės, 17 08 2022, 1 spec.

***Gastropacha quercifolia* (Linnaeus, 1758)**

Kalniškės, 28 06 2022, 1 spec., 30 06 2022, 1 spec., 01 07 2022, 2 spec., 02 07 2022, 2 spec., 04 07 2022, 1 spec.

***Odonestis pruni* (Linnaeus, 1758)**

Kalniškės, 29 06 2022, 2 spec., 30 06 2022, 3 spec., 01 07 2022, 3 spec., 03 07 2022, 2 spec., 05 07 2022, 1 spec.

SPHINGIDAE

***Amorpha amurensis* (Fischer von Waldheim, 1830)**

Kalniškės, 06 06 2022, 1 spec., 09 06 2022, 2 spec., 27 06 2022, 1 spec., 15 08 2022, 1 spec.

***Acherontia atropos* (Linnaeus, 1758)**

Paželsviai, 04 08 2022, 1 larva (V.A.).

NOTODONTIDAE

***Cerura erminea* (Esper, 1783)**

Kalniškės, 26 06 2022, 2 spec., 29 06 2022, 1 spec., 05 07 2022, 1 spec., 04 08 2022, 1 spec.

***Stauropus fagi* (Linnaeus, 1758)**

Gvazdikai, 28 06 2022, 1 spec., 29 06 2022, 2 spec., 02 07 2022, 1 spec., 05 07 2022, 1 spec.; Kalniškės, 28 06 2022, 1 spec., 29 06 2022, 1 spec., 01 07 2022, 1 spec., 04 07 2022, 1 spec., 19 07 2022, 1 spec., 07 08 2022, 1 spec., 08 08 2022, 1 spec., 16 08 2022, 1 spec., 19 08 2022, 1 spec.

***Ptilidon cucullina* (Denis & Schiffermüller, 1775)**

Gvazdikai, 05 07 2022, 1 spec.

***Clostera anachoreta* (Denis & Schiffermüller, 1775)**

Gvazdikai, 22 07 2022, 1 spec.; Kalniškės, 24 07 2022, 1 spec., 26 07 2022, 2 spec.

***Clostera anastomosis* (Linnaeus, 1758)**

Kalniškės, 16 08 2022, 1 spec.; Merkinė, 25 08 2022, 9 spec.

EREBIDAE

***Arctornis l-nigrum* (Müller, 1764)**

Gvazdikai, 06 07 2022, 1 spec.; Kalniškės, 04 07 2022, 1 spec., 05 07 2022, 1 spec., 06 07 2022, 1 spec., 09 07 2022, 1 spec., 23 07 2022, 1 spec.

***Lymantria dispar* (Linnaeus, 1758)**

Gvazdikai, 05 08 2022, 1 male; Kalniškės, 13 08 2022, 1♂.

***Diaphora mendica* (Clerck, 1759)**

Kalniškės, 18 05 2022, 1 spec., 05 07 2022, 2 spec., 07 07 2022, 1 spec., 13 07 2022, 1 spec.

***Callimorpha dominula* (Linnaeus, 1758)**

Gvazdikai, 27 06 2022, 1 spec., 01 07 2022, 1 spec., 05 07 2022, 1 spec.; Kalniškės, 01 07 2022, 1 spec.

***Diacrisia purpurata* (Linnaeus, 1758)**

Gvazdikai, 30 06 2022, 1 spec.; Kalniškės, 04 07 2022, 1 spec., 16 07 2022, 1 spec.

***Calyptria thalictri* (Borkhausen, 1790)**

Gvazdikai, 26 07 2022, 1 spec.

****Eublemma purpurina* (Denis & Schiffermüller, 1775) (Fig. 6)**

Gvazdikai, 24 08 2022, 1 spec.

***Catephia alchymista* (Denis & Schiffermüller, 1775)**

Kalniškės, 02–05 07 2022, 1 spec. (in wine trap).

***Catocala electa* (Vieweg, 1790)**

Merkinė, 25 08 2022, 1 spec.

***Catocala promisa* (Denis & Schiffermüller, 1775)**

Būtingė, 11–18 08 2022, 1 spec. (in wine trap); Kalniškės, 28 07 2022, 1 spec. (in wine trap), 02 08 2022, 1 spec. (in wine trap), 01–03 09 2022, 1 spec. (in wine trap), 10–12 09 2022, 1 spec.

***Catocala elocata* (Esper, 1787)**

Kalniškės, 01–03 09 2022, 1 spec. (in wine trap).

***Catocala fulminea* (Scopoli, 1763)**

Gvazdikai, 22–25 07 2022, 3 spec. (in wine trap), 24 07 2022, 1 spec., 26 07 2022, 1 spec., 31 07 2022, 2 spec.; 05 08 2022, 1 spec., 12 08 2022, 1 spec., 15 08 2022, 2 spec., 21 08 2022, 1 spec.; Kalniškės, 15 08 2022, 4 spec., 16 08 2022, 1 spec., Kalniškės, 26 07 2022, 2 spec., 30 07 2022, 1 spec., 01 08 2022, 1 spec., 04 08 2022, 1 spec., 05 08 2022, 4 spec., 06 08 2022, 1 spec., 12 08 2022, 1 spec., 12 08 2022, 3 spec. (in wine trap), 14 08 2022, 1 spec., 16 08 2022, 4 spec. (in wine trap). 16 08 2022, 5 spec., 19 08 2022, 2 spec., 21 08 2022, 1 spec., 22 08 2022, 1 spec., 24 08 2022, 2 spec., 27 08 2022, 1 spec., 28 08 2022, 1 spec., 01–03 09 2022, 1 spec. (in wine trap).

NOCTUIDAE

***Trichoplusia ni* (Hübner, 1803)**

Gvazdikai, 24 08 2022, 1 spec.; Merkinė, 25 08 2022, 1 spec.

***Lamprotes c-aureum* (Knoch, 1781)**

Kalniškės, 05 07 2022, 1 spec., 16 07 2022, 3 spec., 22 07 2022, 1 spec., 23 07 2022, 2 spec., 25 07 2022, 1 spec., 08 08 2022, 1 spec., 15 08 2022, 1 spec.

***Autographa buraetica* (Staudinger, 1892)**

Gvazdikai, 02 07 2022, 1 spec.

***Autographa mandarina* (Freyer, 1845)**

Gvazdikai, 02 07 2022, 1 spec., 31 07 2022, 1 spec.; Kalniškės, 26 07 2022, 1 spec., 01 08 2022, 1 spec.

***Cucullia scrophulariae* (Denis & Schiffermüller, 1775)**

Kalniškės, 10 07 2022, 1 spec.

***Amphipyra perflua* (Fabricius, 1787)**

Gvazdikai, 20 07 2022, 1 spec. (in wine trap), 26 07 2022, 1 spec., 02 08 2022, 1 spec.; Kalniškės, 28 07 2022, 1 spec. (in wine trap), 08 08 2022, 1 spec., 12 08 2022, 1 spec. (in wine trap), 14 08 2022, 1 spec.

***Amphipyra livida* (Denis & Schiffermüller, 1775)**

Kalniškės, 29 08 2022, 1 spec., 21 10 2022, 1 spec. (in wine trap).

***Acronycta albovenosa* (Goeze, 1781)**

Kalniškės, 23 07 2022, 1 spec., 26 07 2022, 4 spec., 30 07 2022, 1 spec., 01 08 2022, 1 spec., 05 08 2022, 1 spec., 07 08 2022, 1 spec., 08 08 2022, 1 spec., 09 08 2022, 1 spec.

***Acronycta leporina* (Linnaeus, 1758)**

Kalniškės, 22 07 2022, 1 spec.

***Tyta luctuosa* (Denis & Schiffermüller, 1775)**

Kalniškės, 15 08 2022, 1 spec.

***Helcoverpa armigera* (Hübner, 1808)**

Gvazdikai, 24 08 2022, 1 spec., 26 08 2022, 1 spec., 28 08 2022, 1 spec.; Kalniškės, 26 08 2022, 1 spec., 27 08 2022, 6 spec., 28 08 2022, 8 spec., 29 08 2022, 2 spec., 30 08 2022, 1 spec.; Merkinė, 25 08 2022, 6 spec.

***Chilodes maritima* (Tauscher, 1806)**

Kalniškės, 22 07 2022, 1 spec.

***Hydrillula palustris* (Hübner, 1808)**

Kalniškės, Gvazdikai, 31 07 2022, 1 spec.

***Calloplistria juvenina* (Stoll, 1782)**

Būtingė, 18 08 2022, 5 spec.; Gvazdikai, 19 07 2022, 1 spec., 22 07 2022, 2 spec., 23 07 2022, 1 spec., 22–25 07 2022, 1 spec. (in wine trap), 26 07 2022, 2 spec.; 31 07 2022, 1 spec., 01 08 2022, 1 spec., 05 08 2022, 1 spec.; Kalniškės, 31 07 2022, 1 spec.

***Crypsedra gemmea* (Treitschke, 1825)**

Merkinė, 25 08 2022, 1 spec.

***Apamea scolopacina* (Esper, 1788)**

Kalniškės, 16 07 2022, 1 spec.

***Xylomoia graminea* (Graeser, 1889)**

Kalniškės, 23 06 2022, 4 spec., 26 06 2022, 1 spec.

***Hyppa rectilinea* (Esper, 1788)**

Kalniškės, 24 06 2022, 1 spec. (in wine trap); Gvazdikai, 29 06 2022, 2 spec. (in wine trap), 30 06 2022, 1 spec. (in wine trap); Merkinė, 25 08 2022, 16 spec.

***Brachylomia viminalis* (Fabricius, 1776)**

Gvazdikai, 31 07 2022, 1 spec.; Kalniškės, 19 07 2022, 2 spec., 21 07 2022, 1 spec., 23 07 2022, 1 spec., 26 07 2022, 2 spec., 04 08 2022, 1 spec., 11 08 2022, 1 spec. 13 08 2022, 1 spec.

***Fissipunctia ypsilon* (Denis & Schiffermüller, 1775)**

Kalniškės, 13 07 2022, 1 spec. (in wine trap), 17 07 2022, 1 spec. (in wine trap).

***Cosmia pyralina* (Denis & Schiffermüller, 1775)**

Kalniškės, 22 07 2022, 1 spec.

***Atethmia centrigo* (Hübner, 1809)**

Merkinė, 25 08 2022, 1 spec.

***Xylena solidaginis* (Hübner, 1803)**

Kalniškės, 27 08 2022, 1 spec.

***Antitype chi* (Linnaeus, 1758)**

Kalniškės, 27 08 2022, 1 spec.

***Conisania luteago* (Denis & Schiffermüller, 1775)**

Gvazdikai, 01 07 2022, 1 spec.

***Mythimna albipuncta* (Denis & Schiffermüller, 1775)**

Būtingė, 11 08 2022, 3 spec., 18 08 2022, 8 spec.; Kalniškės, 24 07 2022, 1 spec., 28 07 2022, 1 spec. (in wine trap), 15 08 2022, 1 spec., 26 08 2022, 3 spec., 29 08 2022, 1 spec.

***Mythimna l-album* (Linnaeus, 1767)**

Gvazdikai, 27 06 2022, 1 spec., 28 06 2022, 1 spec.

***Mythimna pudorina* (Denis & Schiffermüller, 1775)**

Kalniškės, 01 07 2022, 1 spec., 05 07 2022, 1 spec., 05 07 2022, 2 spec., 09 07 2022, 1 spec., 14 07 2022, 1 spec.

***Leucania obsoleta* (Hübner, 1803)**

Kalniškės, 23 06 2022, 3 spec., 26 06 2022, 4 spec., 27 06 2022, 1 spec., 29 06 2022, 1 spec., 30 06 2022, 1 spec., 02–05 07 2022, 1 spec. (in wine trap).

***Rhyacia simulans* (Hufnagel, 1766)**

Kalniškės, 29 08 2022, 1 spec.

***Noctua comes* Hübner, 1813**

Būtingė, 18 08 2022, 2 spec.

***Noctua interjecta* Hübner, 1803**

Būtingė, 18 08 2022, 1 spec.; Kalniškės, 05 08 2022, 1 spec.

***Noctua interposita* Hübner, 1790**

Būtingė, 18 08 2022, 7 spec.

***Noctua janthe* (Borkhausen, 1792)**

Būtingė, 18 08 2022, 7 spec.; Gvazdikai, 05 08 2022, 1 spec., 15 08 2022, 2 spec., 16 08 2022, 1 spec.; Kalniškės, 20 08 2022, 3 spec.

***Noctua janthina* (Denis & Schiffermüller, 1775)**

Gvazdikai, 19 07 2022, 1 spec., 05 08 2022, 1 spec., 12 08 2022, 1 spec.; Kalniškės, 01 08 2022, 1 spec., 15 08 2022, 1 spec., 16 08 2022, 3 spec., 19 08 2022, 1 spec.

***Eugraphe sigma* (Denis & Schiffermüller, 1775)**

Gvazdikai, 27 06 2022, 1 spec., 28 06 2022, 3 spec., 29 06 2022, 1 spec., 30 06 2022, 3 spec., 01 07 2022, 2 spec., 02 07 2022, 10 spec., 05 07 2022, 3 spec., 06 07 2022, 1 spec.; 19 07 2022, 1 spec., 20 07 2022, 1 spec. (in wine trap), 20 07 2022, 1 spec.

***Protolampra sobrina* (Duponchel, 1843)**

Gvazdikai, 15 08 2022, 1 spec.

Discussion

Five species of Lepidoptera that have been registered in Lithuania for the first time are presented in this report.

Many specimens of *Argyresthia trifasciata* were found on *Chamaecyparis*. Previously this species was found in Nordic-Baltic countries and therefore was expected to appear in Lithuania as well (Aarvik *et al.*, 2020). Larvae are mining needles of *Chamaecyparis*, *Thuja*, *Juniperus* sp.

Rhigognostis schmaltzella was found in Nordic-Baltic countries, excluding Denmark (Aarvik *et al.*, 2020). The host plant of larvae is unknown.

Coleotechnites piceaella is known from USA and Canada. Species was introduced to Europe – at first found in Great Britain, later in Germany, France, Italy and Hungary. Regarding the northern part of Europe, it is found only in Sweden (Aarvik *et al.*, 2020). The larva feeds on needles of *Abies*. All Lithuanian specimens were found close to old host plant, sitting on *Thuja* branches.

Sciota lucipetella is distributed in Denmark, Finland, Estonia and Latvia (Aarvik *et al.*, 2017). In Latvia there were many findings across the country (Savenkov *pers. com.*) The host plant of larvae is unknown.

Eublemma purpurina is a migrant species. Constantly found in west Africa, southern Europe, Asia, Russia. Known in Hungary, Czech Republic, Finland, Estonia. The larvae feeds on *Cirsium arvense*. In southern countries two generations were registered (Karsholt *et al.*, 2013).

Parectopa robiniella is known from most European countries (Karsholt *et al.*, 2013). This species is widely spread but rare in Lithuania, the mines of this species are found in many locations. For species such as *Ascotis selenaria*, *Trichoplusia ni*, *Nephopteryx angustella*, *Etiella zinckeniella*, *Tyta luctuosa*, *Atethmia centrigo* and many others, new

data on distribution is presented. *Oegoconia deauratella* in suitable locations is not rare. The species *Isturgia arenacearia*, *Peribatodes secundaria*, *Calyptria thalictri*, *Catephia alchymista* seems to be spreading in Lithuania. *Anchinia daphnella*, *Synanthedon conopiformis*, *Papilio machaon*, *Lysandra coridon*, *Lycaena dispar* are protected species and included into Lithuanian Red Data Book (Rašomavičius, 2021). *Sclerocona acutellus*, *Helicoverpa armigera*, *Mythimna albipuncta*, *M. l-album*, *Nephopteryx angustella* are now resident species, because they are found during the warmer season. A new data on *Cydalima perspectalis* are given in this paper. For many moths species listed here new data on distribution in Lithuania are presented.

Acknowledgements

Authors are grateful to Nikolajs Savenkovs for reporting new data about Latvian Lepidoptera fauna and for consultations, Radvilė Markevičiūtė is thanked for nice photographs of specimens, Eglė Rubavičienė – for information about the discovery of larva of *Acherontia* by Vincas Aleksandravičius and Juratė Sendžikaitė is thanked for valuable information.

References

- Aarvik L., Bengtsson B. A., Elven H., Ivinskis P., Jurivete U., Karsholt O., Mutanen M., Savenkov N. 2017. Nordic-Baltic checklist of Lepidoptera. *Norwegian Journal of entomology, supplement* 3.
- Aarvik L., Bengtsson B. A., Elven H., Ivinskis P., Jurivete U., Karsholt O., Mutanen M., Savenkov N. 2021. Additions and corrections to the Nordic-Baltic Checklist of Lepidoptera. *Norwegian Journal of Entomology*. 18 June, 14 p.
- Bengtsson B. A., Johansson R., Palmqvist G. 2008. *Nationalnyckeln till Sveriges flora och fauna. Fjärilar: Käkmalar-Säckspinnare (Lepidoptera: Micropterigidae–Psychidae)*. ArtDatabanken, SLU, Upsala.
- Bengtsson B. A. & Johansson R. 2011. *Nationalnyckeln till Sveriges flora och fauna. Fjärilar: Bronsmalar-rullvingemalar. (Lepidoptera: Roeslerstammiidae–Lyonetiidae)*. ArtDatabanken, SLU, Upsala.
- Buszko J. 2020. Crambidae i Thyrididae Polski. *Novy Sącz*.
- Emmet M (ed.) 1996. *The moths and butterflies of Great Britain and Ireland, Vol.3*, Essex.
- Ivinskis P. 2004. *Lepidoptera of Lithuania. Annotated catalogue*. Vilnius.
- Ivinskis P., Rimšaitė J. 2018. Checklist of the Lithuanian *Lepidoptera*. Vilnius.
- Karsholt O., Nieuwerkerken E. J. van & de Jong Y. S. D. M. 2013. Lepidoptera, Moths. Fauna Europaea version 2.6, <http://www.faunaeur.org> (Accessed October 23, 2019).
- Leraut P. 2014. *Moths of Europe*. Vol 4, Pyralids 2, Verrieres le Buisson.
- Rašomavičius V. (ed.). 2021. Lietuvos Raudonoji knyga. Animals, plants, fungi. Kaunas.
- Razowski J. 2001. Die Tortriciden (Lepidoptera, Tortricidae) Mitteleuropas. Bratislava.
- Slamka F. 2010. *Pyraloidea (Lepidoptera) of Central Europe*. Bratislava.
- Svensson I. 2006. Nordens vecklare M. The Nordic Tortricidae. Lund.

Nauji duomenys apie retas ir naujas Lietuvos faunai drugių rūšis, 2022 metų pranešimas

P. IVINSKIS, J. RIMŠAITĖ

Santrauka

Straipsnyje pateikiami duomenys apie 5 naujas – *Argyresthia trifasciata*, *Rhigognostis schmaltzella*, *Coleotechnites piceaella*, *Sciota lucipetella*, *Eublemma purpurina* – ir eilę retų Lietuvos faunai drugių rūšių.

Nauji paplitimo duomenys pateikiami rūšims *Ascotis selenaria*, *Trichoplusia ni*, *Nepopteryx angustella*, *Etiella zinckenella*, *Tyta luctuosa*, *Atethmia centrigo*, o taip pat į Lietuvos Raudonąją knygą įrašytoms rūšims *Anchinia daphnella*, *Synanthedon conopiformis*, *Papilio machaon*, *Lysandra coridon* ir *Lycaena dispar*.

Parectopa robiniella, *Cydalima perspectalis* akivaizdžiai plinta Lietuvoje, o pastaroji jau daro didelę žalą.

Received 23 October, 2022